

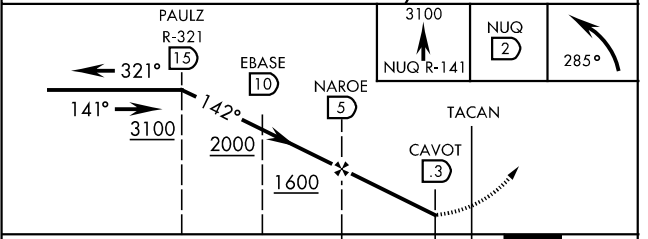
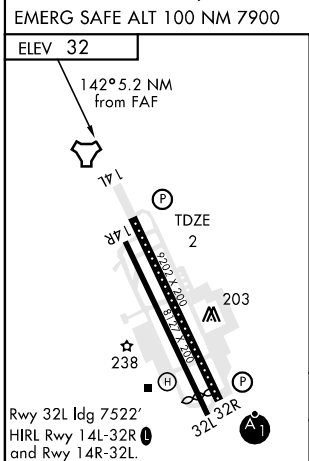
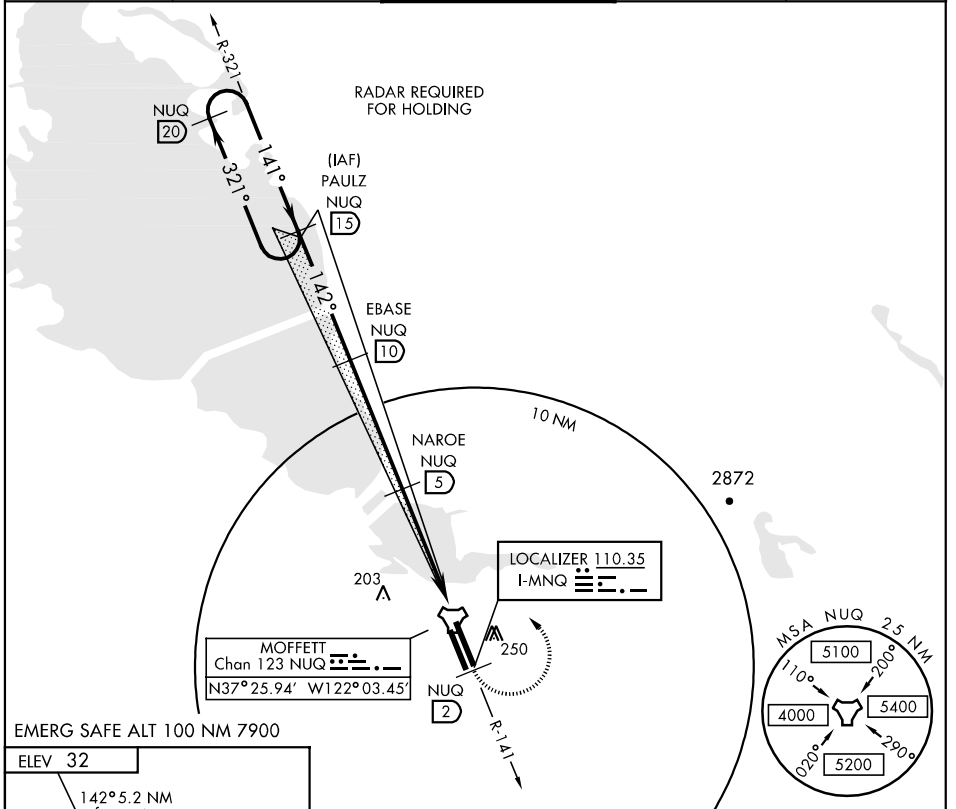
MOUNTAIN VIEW, CALIFORNIA

LOC/DME RWY 14L

LOC I-MNQ 110.35	APCH CRS 142°	Rwy ldg TDZE 9202 2 Arpt Elev 32	AL-410 [USAF]	MOFFETT FEDERAL AFLD (KNUQ)
----------------------------	-------------------------	--	---------------	-----------------------------

▼ MISSED APPROACH: Climb to 3100 via NUQ R-141 to 2 DME, left turn heading 285° to intercept and proceed via R-321 to PAULZ, 15 DME and hold. Expect RADAR vectors.

ATIS/ASOS ★ 124.175 283.0	SIERRA APP CON 120.1 290.25	MOFFETT TOWER ★ 119.55 0 (CTAF) 346.25	GND CON 121.85 336.4	CLNC DEL 380.8
-------------------------------------	---------------------------------------	--	--------------------------------	--------------------------



CATEGORY	A	B	C	D
S-LOC 14L	380-1	378	(400-1)	380-1¼ 378 (400-1¼)
CIRCLING	560-1	528 (600-1)	560-1½ 528 (600-1½)	600-2 568 (600-2)

MOUNTAIN VIEW, CALIFORNIA 37°25'N-122°03'W MOFFETT FEDERAL AFLD (KNUQ)

LOC/DME RWY 14L

Effective 20 FEB 2003 - 20 MAR 2003